



22,00 m



20,00 m



13,00 m



140x70x110



300 Kg



360°



aluminium



90°+90°

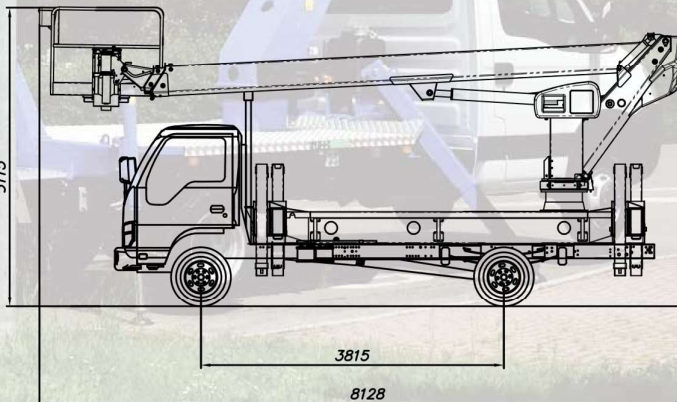
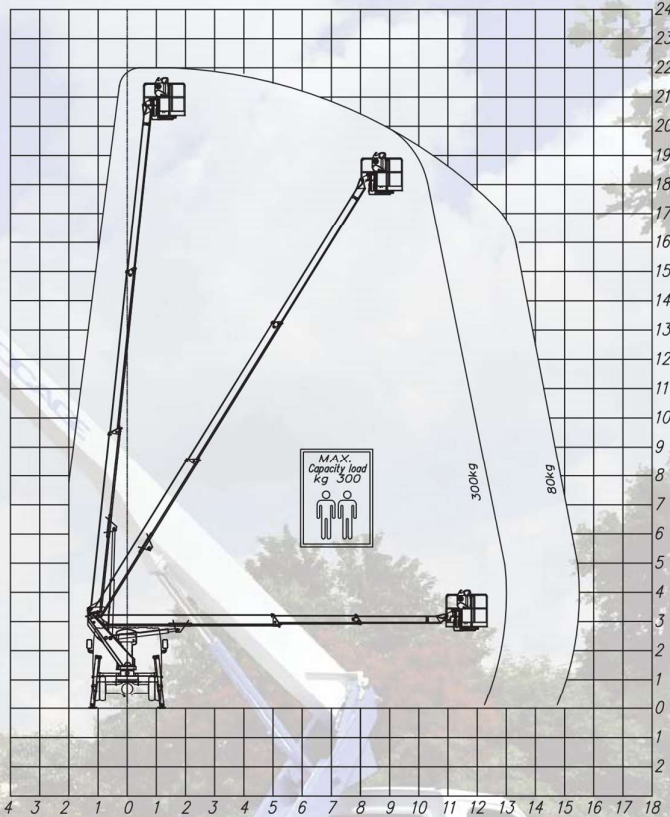


hydraulic



H+H

6.3 t

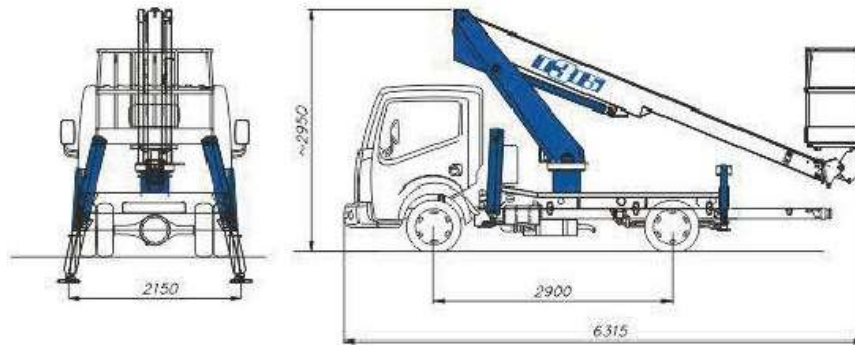
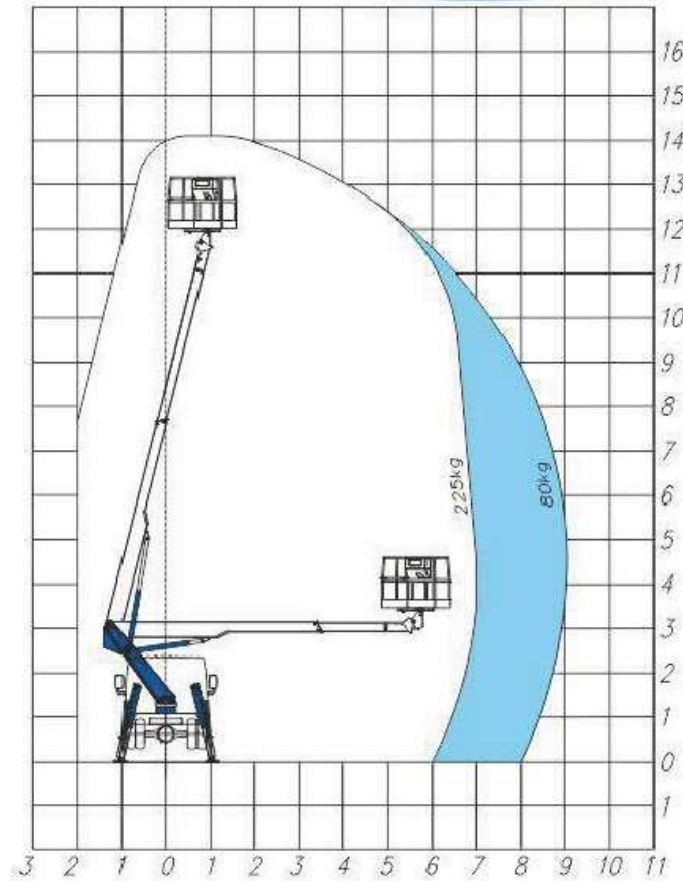


22T









# T315

For Site



aluminium

90°+90°

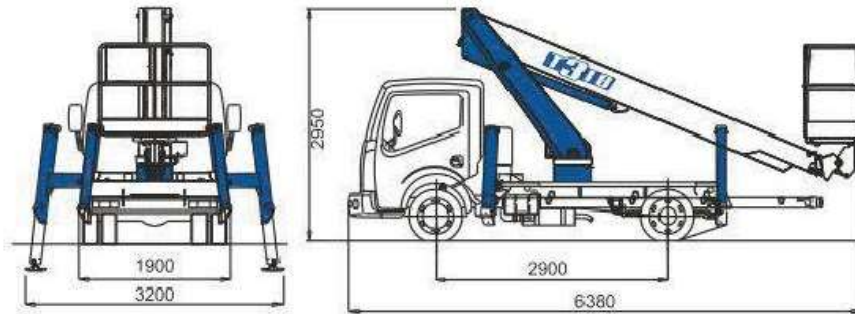
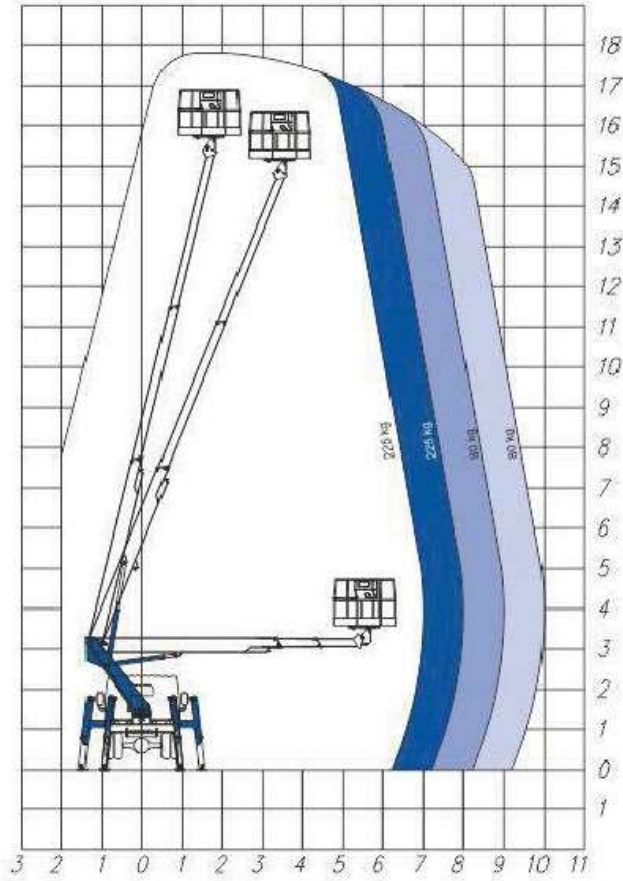
hydraulic

A+H

3,5T







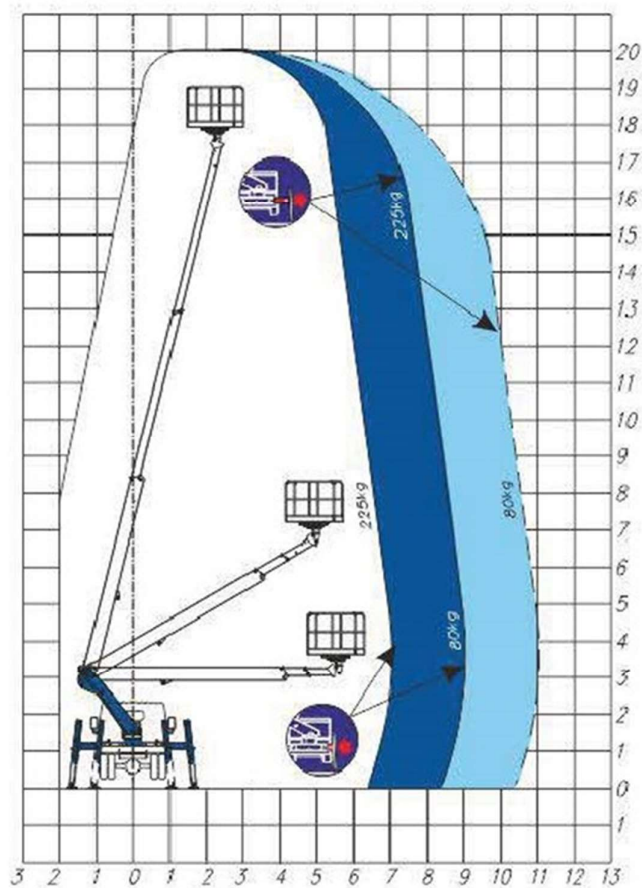
# T318

For Sco



aluminium | 90°+90° | hydraulic | ME+H | 3,5T





# T320

For Site



aluminium

90°+90°

hydraulic

ME+H

3,5T