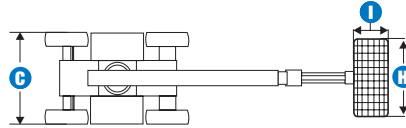
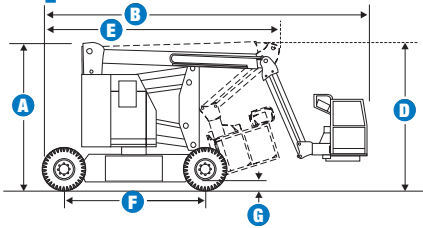


# Specifications



## MODEL Z™-34/22DC AND BI-ENERGY

MEASUREMENTS	Metric	Imperial
Working height max	12.3 m	40 ft 8 in
Platform height max	10.5 m	34 ft 8 in
<b>A</b> Height - stowed	1.8 m	6 ft 7 in
<b>B</b> Length - stowed	5.61 m	18 ft 6 in
<b>C</b> Width	1.72 m	5 ft 8 in
<b>D</b> Storage height	2.26 m	89 in
<b>E</b> Storage length	4.06 m	13 ft 5 in
<b>F</b> Wheelbase	1.87 m	6 ft 2 in
<b>G</b> Ground clearance	15 cm	6 in
<b>H</b> Platform width	1.42 m	56 in
<b>I</b> Platform length	76 cm	30 in
Horizontal reach max	6.77 m	22 ft 4 in
Up and over clearance	4.54 m	15 ft

## PRODUCTIVITY

Lift capacity	227 kg	500 lb
Platform rotation	160°	160°
Turntable rotation	355°	355°
Tailswing	zero	
Drive speed - stowed	0 - 6 km/h	3.7 mph
Drive speed - raised*	0 - 1 km/h	0.6 mph
Gradeability	30%	30%
Turning radius (inside)	1.72	5 ft 8 in
Turning radius (outside)	3.96 m	13 ft 1 in
Controls	24V DC proportional	
Tyres	9 - 14.5 pneumatic	

## POWER

Power source	48V (8 6V 315 AH batteries) or 48V with Kubota Diesel 9 kw (12 hp)	
Hydraulic tank capacity	19 L	5gal
Fuel tank capacity	35 L	9.3 gal
Auxiliary power unit	standard (electric)	

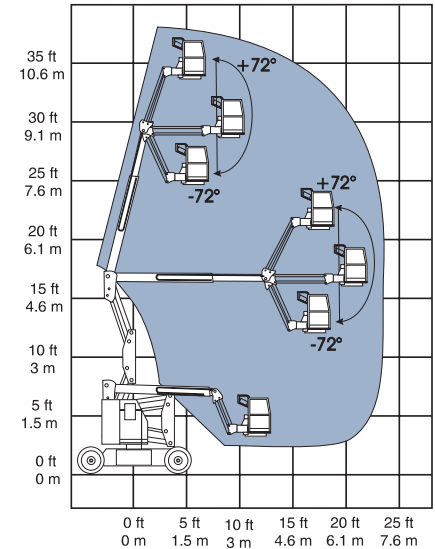
## WEIGHT

Weight - DC	5,103 kg	11,250 lb
Weight - Bi-Energy	5,307 kg	11,699 lb

## STANDARDS COMPLIANCE

	ANSI/SIA A92.5
	CE compliance option
	CSA CAN3-B354.4-M82
	AS 1418.10

## RANGE OF MOTION Z™-34/22 DC



\* In lift mode (platform raised), the machine is designed for operation on firm, level surface only.

## Features

### PLATFORM

- Self-levelling platform

### JIB

- 1.2 m (4 ft) jib features 144° working range

### POWER

- 48 V DC power source

### DRIVE

- Sep-Ex 48V DC drive

### TYRE

- 9 - 14.5 pneumatic

## STANDARD FEATURES

### MEASUREMENTS

- 12.3 m (40 ft 8 in) working height
- 6.8 m (22 ft 4 in) horizontal reach
- Compact 1.73 m (68 in) width
- 1.02 m (4 ft) jib features 144° working range
- 227 kg (500 lb) platform capacity

### PRODUCTIVITY

- 48V DC power source
- Fully proportional controls
- 160° powered platform rotation
- Self-levelling platform
- Auxiliary power unit
- Drive enable system
- Dual wheel spring applied brakes
- Battery charge indicator (Bi-Energy only)
- Hour meter
- Foam-filled tyres

### POWER

- 48V (8 6V 315 AH batteries)  
or 48V with Kubota Diesel  
9 kw (12 hp)



## OPTIONS & ACCESSORIES

### PRODUCTIVITY

- Alarm package
- Platform-mounted work light
- Cold start package
- Hand pump
- 1.02 m (4 ft) platform
- Non-marking tyres
- Swing gate
- Rough terrain tyres
- Full mesh platform
- LVI (low voltage interrupt)
- Air line to platform

### Genie Australia

591 Boundary Road, Darra, Qld 4076  
PO Box 394, Richlands, Qld 4077  
Tel: + 61 7 3375 1660  
Toll Free In Australia: 1800 331 660  
Fax: + 61 7 3375 1002

### European Offices

#### UK

The Maltings  
Wharf Road  
Grantham NG31 6BH  
UK  
Tel: +44 (0)1476 584333  
Fax: +44 (0)1476 584334

#### France

10, ZA de la Croix St. Mathieu  
28320 Gallardon  
France  
Tel: +33 (0)2 37 26 09 99  
Fax: +33 (0)2 37 26 09 98

#### Germany

Finienweg 3  
28832 Achim/Bremen  
Germany  
Tel: +49 (0)4202 8852-0  
Fax: +49 (0)4202 8852-25

#### Spain

Gai`a 31, Pol. Ind. Pl`a d'en Coll  
08110 Montcada i Reixac  
Barcelona  
Spain  
Tel: +34 93 572 50 90  
Fax: +34 93 572 50 91

#### Scandinavia

Tagenevägen 72  
425 37 Hisings Kärra  
Sweden  
Tel: +46 31 57 51 00  
Fax: +46 31 57 90 20

### Genie United States

18340 NE 76th Street  
P.O. Box 97030  
Redmond, Washington 98073-9730  
USA  
Tel: +1 425 881-1800  
Fax: +1 425 883-3475

**WEB:** [www.genieindustries.com.au](http://www.genieindustries.com.au)

**Distributed By:**